

SOPRANO CORNET IN Eb

FANFARE

ANDY NORMAN
WWW.PDFBRASS.COM

MAESTOSO ♩ = 70

ff

6

RALL.

1ST CORNET IN B \flat

FANFARE

ANDY NORMAN
WWW.PDFBRASS.COM

MAESTOSO ♩ = 70

ff

6

RALL.

2ND CORNET IN B \flat

FANFARE

ANDY NORMAN

WWW.PDFBRASS.COM

MAESTOSO $\text{♩} = 70$

ff

6

RALL.

3RD CORNET IN B \flat

FANFARE

ANDY NORMAN

WWW.PDFBRASS.COM

MAESTOSO $\text{♩} = 70$

The first staff of music is written in treble clef with a 3/4 time signature. It begins with a dynamic marking of *ff*. The tempo is marked MAESTOSO with a quarter note equal to 70 beats per minute. The melody consists of a series of eighth and sixteenth notes, many with accents, creating a rhythmic fanfare pattern.

6

The second staff of music continues the melody from the first staff, starting at measure 6. It features a dynamic marking of *ff* and a tempo marking of RALL. (Ritardando). The music concludes with a double bar line.

FLUGELHORN

FANFARE

ANDY NORMAN
WWW.PDFBRASS.COM

MAESTOSO ♩ = 70

ff

6

RALL.

1ST HORN

FANFARE

ANDY NORMAN

WWW.PDFBRASS.COM

MAESTOSO ♩ = 70

ff

RALL.

2ND HORN

FANFARE

ANDY NORMAN
WWW.PDFBRASS.COM

MAESTOSO ♩ = 70

ff

7 RALL.

1ST TROMBONE/BARITONE

FANFARE

ANDY NORMAN
WWW.PDFBRASS.COM

MAESTOSO ♩ = 70

ff

6

RALL.

2ND TROMBONE/BARITONE

FANFARE

ANDY NORMAN
WWW.PDFBRASS.COM

MAESTOSO ♩ = 70

ff

7

RALL.

BASS TROMBONE

FANFARE

ANDY NORMAN

WWW.PDFBRASS.COM

MAESTOSO ♩ = 70

ff

8

RALL.

EUPHONIUM

FANFARE

ANDY NORMAN
WWW.PDFBRASS.COM

MAESTOSO ♩ = 70

ff

8

RALL.

BASS IN E \flat

FANFARE

ANDY NORMAN
WWW.PDFBRASS.COM

MAESTOSO $\text{♩} = 70$

ff

8 RALL.

RALL.

BASS IN B \flat

FANFARE

ANDY NORMAN

WWW.PDFBRASS.COM

MAESTOSO $\text{♩} = 70$

The first staff of music is written in treble clef with a 3/4 time signature. It begins with a *ff* dynamic marking. The melody consists of quarter notes and eighth notes, with accents (>) placed above several notes. The piece concludes with a double bar line.

8

The second staff of music is written in treble clef. It begins with a *RALL.* marking. The melody continues with eighth and sixteenth notes, maintaining the accent (>) pattern. The piece ends with a double bar line.

TIMPANI

FANFARE

ANDY NORMAN
WWW.PDFBRASS.COM

MAESTOSO ♩ = 70

ff

Musical notation for measures 1-5 in bass clef, 3/4 time. The first measure has a fermata over the first quarter note. The second measure has a fermata over the first quarter note. The third measure has a fermata over the first quarter note. The fourth measure has a fermata over the first quarter note. The fifth measure has a fermata over the first quarter note.

6

Musical notation for measures 6-10 in bass clef, 3/4 time. The first measure has a fermata over the first quarter note. The second measure has a fermata over the first quarter note. The third measure has a fermata over the first quarter note. The fourth measure has a fermata over the first quarter note. The fifth measure has a fermata over the first quarter note.

10

RALL.

Musical notation for measures 11-15 in bass clef, 3/4 time. The first measure has a fermata over the first quarter note. The second measure has a fermata over the first quarter note. The third measure has a fermata over the first quarter note. The fourth measure has a fermata over the first quarter note. The fifth measure has a fermata over the first quarter note.

SNARE DRUM

FANFARE

ANDY NORMAN
WWW.PDFBRASS.COM

MAESTOSO ♩ = 70

ff

6

10

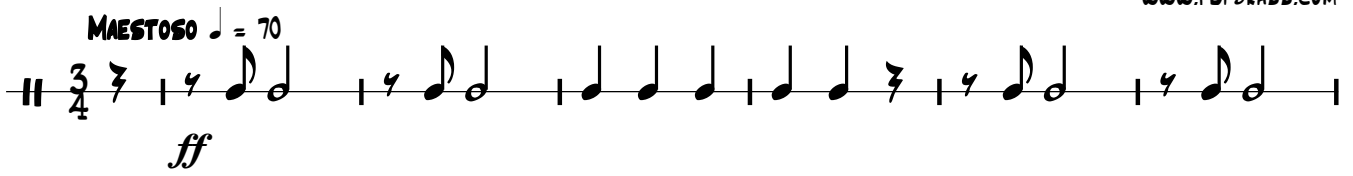
RALL.

BASS DRUM

FANFARE

ANDY NORMAN
WWW.PDFBRASS.COM

MAESTOSO ♩ = 70
ff



7 **RALL.**



CYMBALS

FANFARE

ANDY NORMAN
WWW.PDFBRASS.COM

MAESTOSO ♩ = 70

ff

7

RALL. 2

FANFARE

ANDY NORMAN
WWW.PDFBRASS.COM

MAESTOSO ♩ = 70

The score is for a fanfare in 3/4 time, marked Maestoso with a tempo of 70. It features a full brass section and a percussion section. The brass parts include Soprano Cornet in E♭, 1st, 2nd, and 3rd Cornets in B♭, Flugelhorn, 1st and 2nd Horns, 1st, 2nd, and Bass Trombones/Baritone, Euphonium, and Basses in E♭ and B♭. The percussion section includes Timpani, Snare Drum, Bass Drum, and Cymbals. The music is characterized by strong accents and fortissimo dynamics.

INSTRUMENTS:
SOPRANO CORNET IN E♭
1ST CORNET IN B♭
2ND CORNET IN B♭
3RD CORNET IN B♭
FLUGELHORN
1ST HORN
2ND HORN
1ST TROMBONE/BARITONE
2ND TROMBONE/BARITONE
BASS TROMBONE
EUPHONIUM
BASS IN E♭
BASS IN B♭
TIMPANI
SNARE DRUM
BASS DRUM
CYMBALS

MARKINGS:
ff (fortissimo)
MAESTOSO ♩ = 70

5

SOP. CNT.
1ST COR.
2ND COR.
3RD COR.
FLUG.
1ST HN.
2ND HN.
1ST TBN./BAR.
2ND TBN./BAR.
3. TBN.
EUPH.
Eb BASS
Bb BASS
TIMP.
S. D.
B. D.
CYM.

9

RALL.

SOP. CNT.
1ST COR.
2ND COR.
3RD COR.
FLUG.
1ST HN.
2ND HN.
1ST TRN./BAR.
2ND TRN./BAR.
B. TRN.
EUPH.
Eb BASS
Bb BASS
TIMP.
S. D.
B. D.
CYM.

1ST HORN IN F

FANFARE

ANDY NORMAN

WWW.PDFBRASS.COM

MAESTOSO ♩ = 70

ff

6

RALL.

2ND HORN IN F

FANFARE

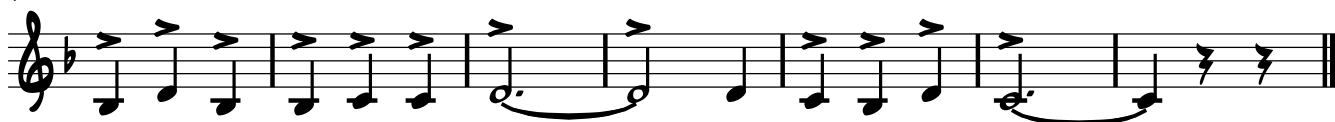
ANDY NORMAN
WWW.PDFBRASS.COM

MAESTOSO ♩ = 70



7

RALL.



1ST TROMBONE/BARITONE

FANFARE

ANDY NORMAN
WWW.PDFBRASS.COM

MAESTOSO ♩ = 70

ff

6

RALL.

2ND TROMBONE/BARITONE

FANFARE

ANDY NORMAN
WWW.PDFBRASS.COM

MAESTOSO ♩ = 70

The first staff of music is in bass clef, 3/4 time, and B-flat major. It begins with a *ff* dynamic marking. The notation consists of a series of eighth and quarter notes with accents, including a triplet of eighth notes in the first measure.

7

The second staff of music continues from the first. It features a *RALL.* marking above the staff. The notation includes a half note with a fermata, followed by a series of quarter notes with accents, and ends with a double bar line.

EUPHONIUM

FANFARE

ANDY NORMAN
WWW.PDFBRASS.COM

MAESTOSO ♩ = 70

ff

8

RALL.

TUBA

FANFARE

ANDY NORMAN
WWW.PDFBRASS.COM

MAESTOSO ♩ = 70

ff

8

RALL.

||